



Technical Support

TECHNICAL NOTE

Technical Note TN-885-SR

TB8100 Calibration Kit Version 2.00.17

21 June 2004

Included in the maintenance release of the TB8100 Service Kit version 2.00 there is version 2.00.17 of the Calibration Kit. This version of Calibration Kit fixes a problem found when connecting to the TB8100 Base Station.

The version of Service Kit on Taitworld now includes this version of Calibration Kit

Changes included in this software release:

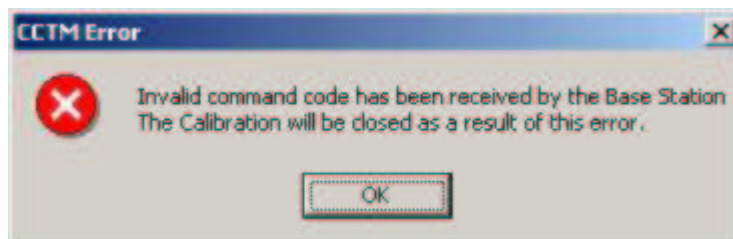
None

Issues Fixed in this Release:

Calibration Kit is unable to connect to the TB8100 Base Station

Description:

When using the Calibration Kit to connect to a TB8100 Base Station the following error message is sometimes displayed:



Selecting okay causes to Calibration Kit to disconnect from the TB8100 Base Station

Solution:

This fault has been fixed.

